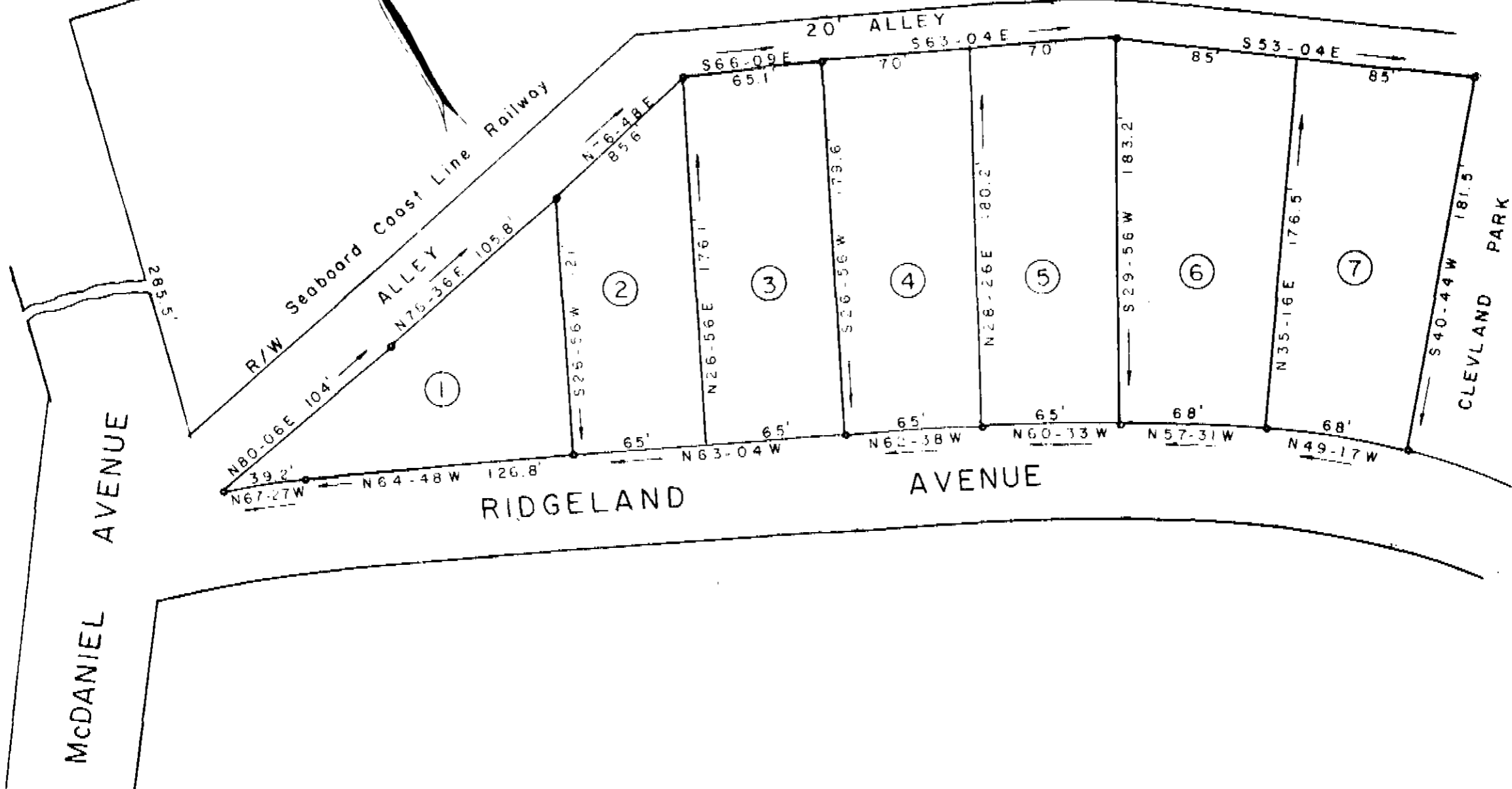


FILED
 GREENVILLE CO. S. C.
 JAN 23 11 30 AM '77
 DONNIE S. TAHERSLEY
 R.M.C.

McBEE AVE.



THIS PLAT IS NOT A SUBDIVISION
 AS DEFINED BY THE SUBDIVISION
 ACT SUBJECT TO THE PROVISIONS OF
 CITY
 1/20/1977 *James T. Miller*
 Chairman, Secretary, or Director of
 Planning *Subdivision Act*
 Greenville County Planning Commission

ESTATE OF
 W. C. CLEVELAND
 S.C. NATIONAL BANK, TRUSTEE
 GREENVILLE, S. C.

Scale 1" = 60' December, 1976

DALTON B NEVES ENGINEERS
 121 MANLY STREET
 GREENVILLE, S. C.

MICROFILMED



19279 ✓
 5 Y-32 ✓
 JAN 20 '77

Re: Cleveland Terrace
 Recorded R.M.C. PB. G-210

4746...
 207 AS

F. B. 417
 S. C. Reg. 6266
 Iron Pins at all Corners